



Central  
Arizona  
College

*Quick Facts*  
*Fall 2016*  
*Student Characteristics &*  
*Enrollment Trends*

**Fall Semester 2016****Table of Contents**

	<b>Page</b>
» » <b>Fall Student District Demographics</b>	3
» » <b>Fall FTSE &amp; Headcount by Campus</b>	4
» » <b>Fall FTSE &amp; Headcount by Physical Location</b>	5
» » <b>Fall FTSE &amp; Headcount by Division</b>	6
» » <b>Fall FTSE &amp; Headcount by Instructional Method</b>	7
» » <b>Fall Average Class Size By Campus</b>	8
» » <b>Fall Average Class Size By Division</b>	9
» » <b>Fall Average Class Size By Instructional Method</b>	10
» » <b>Fall Cancelled Class Summary by Campus</b>	11
» » <b>Fall Cancelled Class Summary by Division</b>	12
» » <b>Fall Cancelled Class Summary by Instructional Method</b>	13
» » <b>Fall Average Age</b>	14
» » <b>Fall Credit Hour Analysis</b>	15
» » <b>Fall Course Size Range Summary</b>	16
» » <b>Top 25 FTSE Generating Courses</b>	17
» » <b>New/Continuing/Returning Students</b>	18

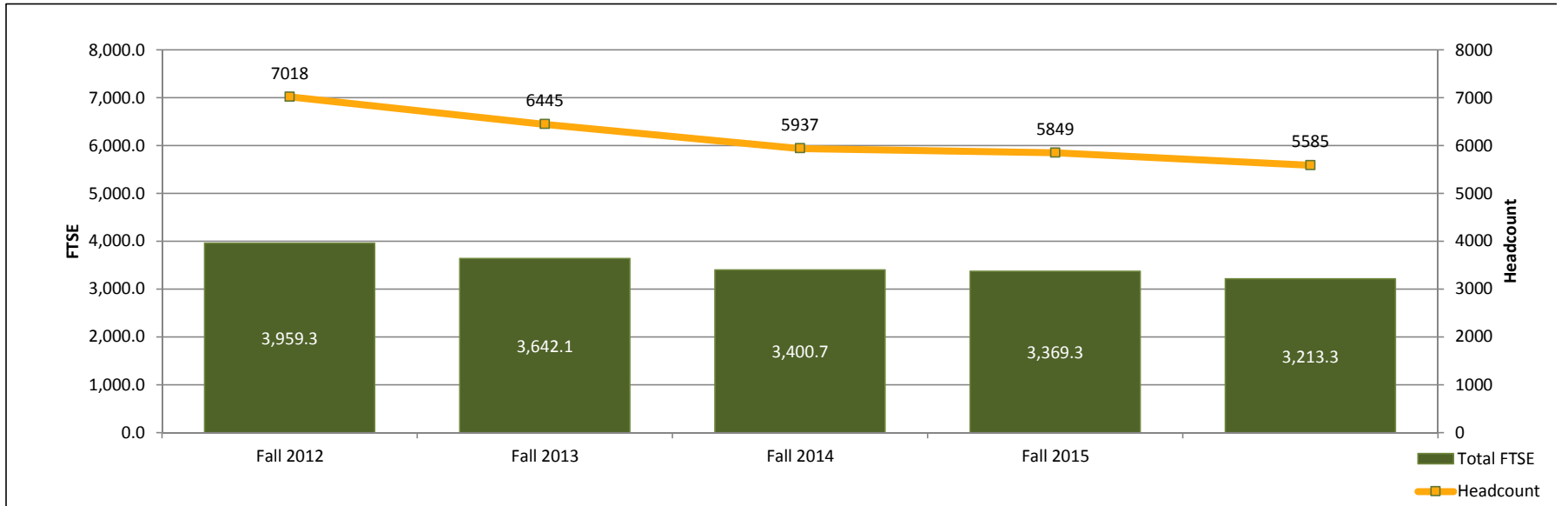
**Central Arizona College  
Factbook  
Fall Semester Student District Demographics**

	<u>Fall 2012</u>	<u>Fall 2013</u>	<u>Fall 2014</u>	<u>Fall 2015</u>	<u>Fall 2016</u>	<u>% Change Fall 2015 - 2016</u>
<b>Semester District FTSE</b>	3959.3	3642.1	3400.7	3369.3	3213.3	-4.6%
<b>Unduplicated Headcount</b>	7018	6445	5937	5849	5585	-4.5%
<b>Total Credit Hours</b>	59389.5	54631.0	51010.8	50540.0	48199.0	-4.6%
<b>Average Credit Hours Per Student</b>	8.46	8.48	8.60	8.60	8.60	0.0%
<b>Full-Time</b>	2355	2129	1925	1897	1836	-3.2%
<b>Part-Time</b>	4663	4316	4012	3952	3749	-5.1%
<b>Degree/Certificate Seeking</b>	5833	5462	5273	5140	4869	-5.3%
<b>Non-Degree/Certificate Seeking</b>	1185	983	658	709	716	1.0%
<b>Gender</b>						
<b>Female</b>	63.2%	63.0%	62.8%	61.9%	61.7%	-0.3%
<b>Male</b>	36.3%	36.8%	36.7%	37.3%	37.4%	0.3%
<b>Not Recorded</b>	0.5%	0.2%	0.5%	0.8%	0.9%	12.5%
<b>Ethnicity</b>						
<b>Asian</b>	1.3%	1.7%	2.0%	2.2%	2.2%	0.0%
<b>Black</b>	6.7%	7.1%	6.9%	6.7%	7.0%	4.5%
<b>Hawaiian-Pacific Island</b>	0.5%	0.5%	0.6%	0.4%	0.5%	25.0%
<b>Hispanic</b>	28.7%	28.3%	27.9%	29.1%	30.9%	6.2%
<b>Native American</b>	4.8%	4.6%	4.6%	4.7%	5.2%	10.6%
<b>Not Identified</b>	0.3%	7.2%	7.8%	8.4%	8.8%	4.8%
<b>Other</b>	10.0%	3.9%	4.0%	4.4%	4.2%	-4.5%
<b>White</b>	47.5%	46.6%	46.3%	44.0%	41.3%	-6.1%
<b>AGE</b>						
<b>Under 18</b>	7.0%	7.1%	6.8%	7.9%	8.8%	11.4%
<b>18-19</b>	25.2%	26.7%	28.3%	28.8%	29.4%	2.1%
<b>20-21</b>	11.7%	12.0%	13.1%	15.2%	15.5%	2.0%
<b>22-24</b>	9.4%	9.1%	8.7%	8.8%	10.0%	13.6%
<b>25-29</b>	11.5%	10.9%	11.3%	10.4%	9.0%	-13.5%
<b>30-34</b>	10.5%	9.8%	9.2%	8.5%	7.6%	-10.6%
<b>35-39</b>	7.6%	7.5%	7.2%	6.3%	6.3%	0.0%
<b>40-49</b>	9.4%	9.8%	9.0%	8.3%	7.9%	-4.8%
<b>50-64</b>	6.4%	5.9%	5.4%	4.7%	4.7%	0.0%
<b>65 &amp; Up</b>	1.3%	1.3%	0.9%	1.0%	0.8%	-20.0%
<b>No Response</b>	0.0%	0.0%	0.0%	0.0%	0.0%	0.0%
<b>Average Age</b>	28	27	27	26	27	3.8%
<b>Residency Status</b>						
<b>Foreign</b>	0.2%	0.3%	0.4%	0.4%	0.4%	0.0%
<b>Out of State</b>	5.0%	4.3%	4.6%	4.6%	3.1%	-32.6%
<b>Out of County</b>	16.7%	16.7%	15.1%	15.5%	14.6%	-5.8%
<b>Pinal County</b>	76.4%	78.5%	79.8%	79.4%	78.2%	-1.5%
<b>Unknown</b>	1.7%	0.2%	0.1%	0.1%	3.5%	100.0%

Source: CASA Semester Demographic Report 10/24/2016

Central Arizona College  
Factbook  
Fall Semester FTSE & Headcount by Campus

FTSE	Fall 2012	Fall 2013	Fall 2014	Fall 2015	Fall 2016	Headcount	Fall 2012	Fall 2013	Fall 2014	Fall 2015	Fall 2016
Aravaipa Campus	66.1	67.1	69.9	60.5	63.9	Aravaipa	187	184	158	154	172
Casa Grande Center	39.8	36.6	20.3	15.6	14.9	Casa Grande Center	199	183	97	73	78
Central Corporate Center	99.7	88.1	91.8	58.6	54.5	Central Corporate Center	325	311	337	214	208
Coolidge	72.5	0.0	0.0	0.0	0.0	Coolidge	160	0	0	0	0
Florence Center	6.1	5.3	0.7	2.9	0.4	Florence Center	30	25	3	12	2
Maricopa Campus	135.3	217.1	239.5	257.9	263.8	Maricopa Campus	358	503	548	589	623
Saddlebrooke Center	3.8	3.8	0.0	0.0	0.0	Saddlebrooke Center	38	36	0	0	0
San Tan Campus	204.3	186.1	278.9	321.0	333.7	San Tan Campus	509	475	643	739	730
Signal Peak Campus	1,682.9	1,536.5	1,339.1	1,392.2	1,247.6	Signal Peak	3,097	2,822	2,485	2,508	2,270
Superstition Mountain Campus	555.3	494.1	438.7	360.5	312.9	Superstition Mountain Campus	1,117	1,051	896	744	670
Virtual	1,093.5	1,007.5	893.4	868.3	899.9	Virtual	2,977	2,733	2,452	2,434	2,480
<b>Total FTSE</b>	<b>3,959.3</b>	<b>3,642.1</b>	<b>3,400.7</b>	<b>3,369.3</b>	<b>3,213.3</b>	<b>Total Unduplicated Headcount</b>	<b>7018</b>	<b>6445</b>	<b>5937</b>	<b>5849</b>	<b>5585</b>



Note: Unduplicated Headcount for the District will not equal the sum of the individual Campuses

Note: Total includes non state funded students

Source: CASA Semester FTSE & Headcount by Campus Report 10/24/2016

Central Arizona College

Factbook

FTSE & Headcount by Location

Location	FTSE					Headcount				
	Fall 2012	Fall 2013	Fall 2014	Fall 2015	Fall 2016	Fall 2012	Fall 2013	Fall 2014	Fall 2015	Fall 2016
Apache Junction High School	4.6	5.4	0.0	0.0	0.0	23	27	0	0	0
Aravaipa Campus	64.3	62.6	69.9	59.8	63.9	208	165	158	152	172
CAVIT	0.0	85.0	0.0	0.0	0.0	0	152	0	0	0
Casa Grande Center	36.4	36.6	20.3	15.6	14.9	182	183	97	73	78
Central Corporate Center	103.1	88.1	91.8	58.6	54.5	341	311	337	214	208
Dave White Park	0.7	0.7	0.7	0.9	0.7	10	11	11	13	10
Florence Center	5.5	5.3	0.7	2.9	0.4	27	25	3	12	2
Maricopa Campus	114.1	221.3	239.5	256.3	262.4	279	504	548	587	617
Online	1,119.5	1,015.1	923.7	935.6	926.4	3,037	2,759	2,539	2,642	2,551
San Tan Campus	193.7	181.8	278.9	316.1	333.7	495	467	643	721	730
Signal Peak Campus	1,653.9	1,435.0	1,336.4	1,364.7	1,247.2	2,985	2,627	2,467	2,433	2,263
St. Anthony's School	1.1	1.4	0.0	0.0	0.0	16	21	0	0	0
Superior High School	2.9	2.9	0.0	0.0	0.0	11	11	0	0	0
Superstition Mountain Campus	545.5	483.0	436.9	359.0	308.9	1,083	990	889	742	662
Vista Grande High School	2.1	0.0	0.0	0.0	0.0	8		0	0	0
<b>District FTSE Total:</b>	<b>3,959.3</b>	<b>3,642.1</b>	<b>3,400.7</b>	<b>3,369.3</b>	<b>3,213.3</b>	<b>7,018</b>	<b>6,445</b>	<b>5,937</b>	<b>5,849</b>	<b>5,585</b>

Note: Total includes non state funded students

Note: Unduplicated Headcount for the District will not equal the sum of the individual Location

Source: CASA Semester FTSE and Enrollment by Location Report 10/19/2016

Central Arizona College Factbook Fall District FTSE & Headcount by Division						
FTSE - Division	Fall 2012	Fall 2013	Fall 2014	Fall 2015	Fall 2016	% Change Fall 2015- 2016
Business	367.4	369.5	383.5	374.2	328.7	-12.2%
Communications	720.8	673.5	632.5	593.5	576.3	-2.9%
Creative Arts	286.1	276.2	247.5	231.8	214.9	-7.3%
Education	113.0	97.9	79.2	87.1	102.9	18.1%
Health Careers	260.6	266.0	221.4	264.3	170.1	-35.6%
Honors	10.2	12.0	7.9	10.4	9.7	-6.4%
Math	521.8	503.0	463.5	498.3	523.7	5.1%
Nursing	72.8	63.8	66.5	69.9	67.3	-3.6%
Nutrition	123.3	128.3	121.9	95.9	65.9	-31.3%
Public Safety	126.1	110.7	79.5	104.6	77.3	-26.1%
Science	451.8	398.5	380.8	394.8	388.9	-1.5%
Social/Behavioral Sciences	482.5	405.1	425.3	337.8	348.1	3.0%
Sports and Fitness	160.0	112.1	99.9	99.9	117.1	17.2%
Technology	173.3	141.2	141.1	157.8	181.5	15.0%
Workforce/Community Education	89.6	84.2	50.3	49.0	40.7	-16.9%
<b>District Total:</b>	<b>3,959.3</b>	<b>3,642.1</b>	<b>3,400.7</b>	<b>3,369.3</b>	<b>3,213.3</b>	<b>-4.6%</b>
Unduplicated Headcount - Division	Fall 2012	Fall 2013	Fall 2014	Fall 2015	Fall 2016	% Change Fall 2015- 2016
Business	1,382	1,319	1,333	1,253	1,125	-10.2%
Communications	2,767	2,585	2,457	2,348	2,289	-2.5%
Creative Arts	1,253	1,165	1,081	993	936	-5.7%
Education	420	393	331	315	366	16.2%
Health Careers	652	598	519	624	476	-23.7%
Honors	56	63	45	56	51	-8.9%
Math	2,231	2,161	1,963	2,120	2,190	3.3%
Nursing	118	108	107	113	110	-2.7%
Nutrition	465	479	442	361	247	-31.6%
Public Safety	235	262	235	254	130	-48.8%
Science	1,543	1,367	1,301	1,345	1,341	-0.3%
Social/Behavioral Sciences	2,118	1,803	1,795	1,517	1,623	7.0%
Sports and Fitness	1,103	883	793	690	769	11.4%
Technology	426	405	389	447	423	-5.4%
Workforce/Community Education	467	438	238	231	207	-10.4%
<b>Unduplicated Total:</b>	<b>7,018</b>	<b>6,445</b>	<b>5,937</b>	<b>5,849</b>	<b>5,585</b>	<b>-4.5%</b>

Note: Unduplicated Headcount for the District will not equal the sum of the individual Divisions

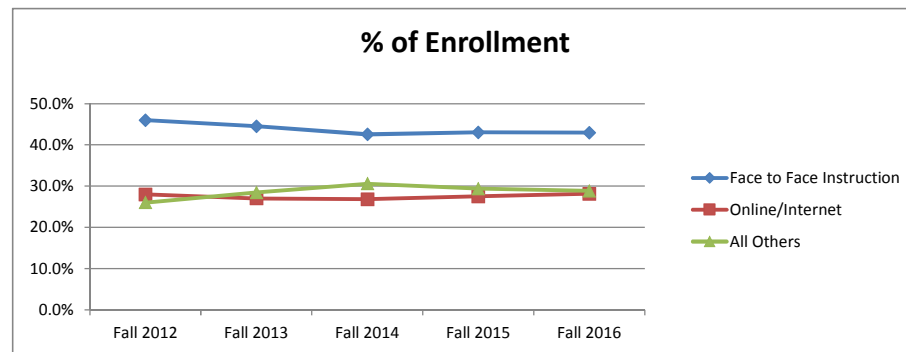
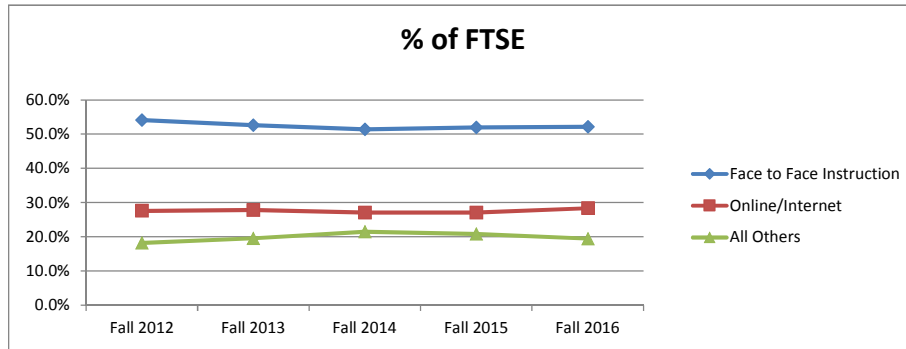
Note: Total includes non state funded students

Source: CASA Semester FTSE and Enrollment by Division Report 10/24/2016

Central Arizona College Factbook Fall FTSE & Headcount by Instructional Method						
FTSE -Instructional Method	Fall 2012	Fall 2013	Fall 2014	Fall 2015	Fall 2016	% Change Fall 2015 - 2016
Face to Face Instruction	2,143.9	1,916.3	1,748.5	1,753.2	1,676.3	-4.4%
Hybrid-F2F/Online	490.1	462.6	457.1	404.7	343.9	-15.0%
Hybrid-F2F/iTV	0.0	1.4	0.0	2.3	0.0	
Hybrid-Online/iTV	145.8	140.6	221.3	211.5	186.3	-11.9%
Independent Directed Study	2.4	2.3	3.3	2.9	10.1	243.7%
Interactive Television	70.9	85.6	23.8	57.0	61.5	7.8%
Internship	9.1	6.1	7.3	9.8	8.4	-14.3%
Mixed Face to Face	0.0	0.0	0.0	1.3	0.0	
Online/Distance	1,093.8	1,013.5	921.9	914.1	912.2	-0.2%
Online Synch	0.0	0.0	4.8	1.6	12.3	670.6%
Practicum	3.3	13.7	12.8	10.9	2.3	-79.1%
FTSE Total	3,959.3	3,642.1	3,400.7	3,369.3	3,213.3	-4.6%
Headcount - Instructional Method	Fall 2012	Fall 2013	Fall 2014	Fall 2015	Fall 2016	% Change Fall 2015 - 2016
Face to Face Instruction	4,896	4,535	4,025	4,015	3,856	-4.0%
Hybrid-F2F/Online	1,792	1,851	1,776	1,545	1,435	-7.1%
Hybrid-F2F/iTV	0	7	0	17	0	
Hybrid-Online/iTV	582	581	861	781	718	-8.1%
Independent Directed Study	7	8	13	14	41	192.9%
Interactive Television	329	363	117	266	295	10.9%
Internship	32	26	32	33	37	12.1%
Mixed Face to Face	0	0	0	20	0	
Online/Distance	2,977	2,753	2,537	2,567	2,527	-1.6%
Online Synch	0	0	18	8	45	462.5%
Practicum	24	66	75	56	17	-69.6%
Headcount Total	7,018	6,445	5,937	5,849	5,585	-4.5%

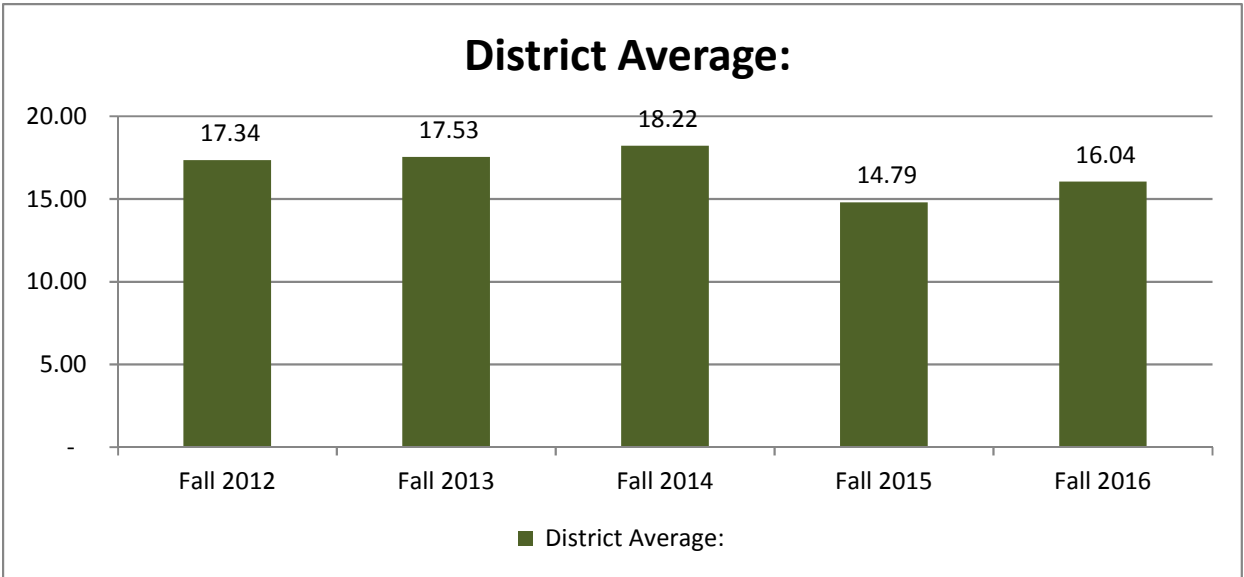
% of FTSE	Fall 2012	Fall 2013	Fall 2014	Fall 2015	Fall 2016
Face to Face Instruction	54.1%	52.6%	51.4%	52.0%	52.2%
Online/Internet	27.6%	27.8%	27.1%	27.1%	28.4%
All Others	18.2%	19.6%	21.5%	20.8%	19.4%

% of Enrollment	Fall 2012	Fall 2013	Fall 2014	Fall 2015	Fall 2016
Face to Face Instruction	46.0%	44.5%	42.6%	43.1%	43.0%
Online/Internet	28.0%	27.0%	26.8%	27.5%	28.2%
All Others	26.0%	28.5%	30.6%	29.4%	28.8%



Note: Unduplicated Headcount for the District will not equal the sum of the individual Divisions  
 Note: Total includes non state funded students  
 Source: CASA Fall FTSE and Enrollment by Instructional Method 10/24/2016

Central Arizona College Factbook Fall Semester Average Class Size by Campus						
Average Course Size - Campus	Fall 2012	Fall 2013	Fall 2014	Fall 2015	Fall 2016	% Change Fall 2015-2016
Aravaipa Campus	8.89	9.69	11.33	7.16	10.42	45.5%
Casa Grande Center	16.58	16.64	12.13	14.60	11.14	-23.7%
Central Corporate Center	15.71	14.92	12.93	8.63	11.88	37.7%
Coolidge	17.13	-	-	-	-	
Florence Center	7.00	10.00	-	2.50	-	
Maricopa Campus	-	17.16	17.00	12.18	16.09	32.1%
Saddlebrokke	12.67	9.50	-	-	-	
San Tan Campus	18.63	16.42	18.53	14.59	16.75	14.8%
Signal Peak Campus	16.97	17.13	18.09	15.10	15.53	2.8%
Superstition Mountain Campus	13.88	14.97	15.48	10.70	13.25	23.8%
Virtual	22.26	21.87	22.11	20.72	19.36	-6.6%
<b>District Average:</b>	17.34	17.53	18.22	14.79	16.04	8.5%
<b>District Average less ASP:</b>	17.34	17.53	18.22	14.79	16.04	8.5%



Note: Total includes non state funded students  
Source: CASA Semester Class Size By Campus Report 10/25/2016

- \*Average Course Size can not be averaged down a Term Code column to equal the District Average at the bottom because each subgrouping has a different unknown number of students causing each subgrouping's average to be weighted differently.
- \*Each iTV course is only counted once no matter how many locations it broadcasts to. Also, each overlay course is only counted once no matter how many courses an instructor is teaching simultaneously.
- \*Independent Study Instructional Method courses are not counted



Central Arizona College Factbook Fall Semester Average Class Size by Division						
FTSE - Division	Fall 2012	Fall 2013	Fall 2014	Fall 2015	Fall 2016	% Change Fall 2015-2016
Arizona State Prison	0.0	0.0	0.0	0.0	0.0	0.0%
Business	17.0	17.1	20.0	11.1	15.8	42.3%
Communications	17.7	17.3	17.4	15.3	15.9	3.8%
Creative Arts	12.5	13.4	13.4	11.2	12.3	10.2%
Education	19.5	19.5	18.2	9.6	18.5	92.7%
Health Careers	17.6	19.8	20.3	20.1	17.7	-11.9%
Honors	3.4	5.7	4.5	4.1	4.8	16.9%
Math	21.2	21.2	20.9	20.6	20.3	-1.4%
Nursing	29.5	22.7	23.3	28.5	27.7	-2.9%
Nutrition	20.2	18.6	23.5	19.7	15.0	-23.9%
Public Safety	14.4	19.4	15.7	16.9	10.2	-39.8%
Science	17.6	17.2	16.9	16.3	16.4	1.1%
Social/Behavioral Sciences	21.6	21.2	22.7	16.6	19.6	17.7%
Sports and Fitness	17.5	16.5	19.5	15.7	16.3	3.8%
Technology	13.4	12.4	13.4	11.3	11.2	-0.6%
Workforce/Community Education	14.2	15.2	13.2	13.6	11.5	-15.4%
<b>District Average</b>	<b>17.3</b>	<b>17.5</b>	<b>18.2</b>	<b>14.8</b>	<b>16.0</b>	<b>8.5%</b>
<b>District Average Without ASP</b>	<b>17.3</b>	<b>17.5</b>	<b>18.2</b>	<b>14.8</b>	<b>16.0</b>	<b>8.5%</b>

Note: Total includes non state funded students

Source: CASA Semester Class Size By Division Report 10/25/2016

\*Average Course Size can not be averaged down a Term Code column to equal the District Average at the bottom because each subgrouping has a different unknown number of students causing each subgrouping's average to be weighted differently.

\*Each iTV course is only counted once no matter how many locations it broadcasts to. Also, each overlay course is only counted once no matter how many courses an instructor is teaching simultaneously.

\*Independent Study Instructional Method courses are not counted

**Central Arizona College  
Factbook  
Fall Semester Average Class Size By Instructional Method**

<b>Instructional Method</b>	<b>Fall 2011</b>	<b>Fall 2012</b>	<b>Fall 2013</b>	<b>Fall 2014</b>	<b>Fall 2015</b>	<b>Fall 2016</b>	<b>% Change Fall 2015-2016</b>
<b>Face to Face Instruction</b>	14.1	15.7	15.8	16.2	15.0	14.5	-2.9%
<b>Hybrid - F2F/Online</b>	15.6	16.6	17.6	18.8	17.9	15.2	-15.1%
<b>Hybrid-F2F/iTV</b>	0.0	0.0	7.0	0.0	8.5	0.0	0.0%
<b>Hybrid - Online/iTV</b>	13.8	14.0	15.9	20.7	16.4	16.4	0.0%
<b>Interactive Television (iTV)</b>	19.6	22.9	20.2	14.9	16.5	20.4	23.8%
<b>Mixed Face to Face</b>	0.0	0.0	0.0	0.0	20.0	0.0	0.0%
<b>Online/Distance</b>	23.0	22.2	21.8	22.1	20.5	19.3	-5.6%
<b>Online/Synch</b>	0.0	0.0	0.0	18.0	8.0	15.0	87.5%
<b>District Average:</b>	16.1	17.3	17.5	18.2	14.8	16.0	8.5%
<b>District Average Without ASP</b>	15.9	17.3	17.5	18.2	14.8	16.0	8.5%

Note: Total includes non state funded students

Source: CASA Semester Class Size By Instructional Method Report 10/25/2016

\*Average Course Size can not be averaged down a Term Code column to equal the District Average at the bottom because each subgrouping has a different unknown number of students causing each subgrouping's average to be weighted differently.

\*Each iTV course is only counted once no matter how many locations it broadcasts to. Also, each overlay course is only counted once no matter how many courses an instructor is teaching simultaneously.

\*Independent Study Instructional Method courses are not counted

Central Arizona College  
Factbook  
Fall Cancelled Class Report  
(Includes only classes where enrollment will be reported on day 45)  
Fall 2016

Campus	# Cancelled Classes	Classes Enrollment > 0	Total Classes	Total Class >0 where Max Enroll set at 0	Total Class >0 and Max Enroll set at >0	% Cancelled	% >Zero Enrollment	Max Enrollment >0 Classes	Actual Enrollment	% of max enrollment	Average Class Size
Aravaipa Campus	11	36	47	0	36	23.0%	77.0%	836	375	45.0%	10.4
Casa Grande Center	0	7	7	1	6	0.0%	100.0%	164	78	48.0%	11.1
Central Corporate Center	7	17	24	0	17	29.0%	71.0%	360	202	56.0%	11.9
Maricopa Campus	16	67	83	2	65	19.0%	81.0%	1,599	1,078	67.0%	16.1
San Tan Campus	10	77	87	0	77	11.0%	89.0%	1,819	1,290	71.0%	16.8
Signal Peak Campus	113	420	533	6	414	21.0%	79.0%	10,888	6,444	59.0%	15.5
Superstition Mountain Campus	25	113	138	3	110	18.0%	82.0%	2,573	1,492	58.0%	13.3
Virtual	27	233	260	4	229	10.0%	90.0%	6,406	4,502	70.0%	19.4
<b>Grand Total</b>	<b>210</b>	<b>970</b>	<b>1,179</b>	<b>16</b>	<b>954</b>	<b>18.0%</b>	<b>82.0%</b>	<b>24,645</b>	<b>15,461</b>	<b>63.0%</b>	<b>16.0</b>

Source: CASA Semester Cancelled Class by Campus Report 10/25/2016

\* Each iTV course is only counted once no matter how many locations it broadcasts to. Also, each overlay course is only counted once no matter how many courses an instructor is teaching simultaneously.

\*Independent Study Instructional Method courses are not counted.

\*CRNs may not be summed down the Term Code column to equal the Grand Total as some courses may have multiple Credit Hour values and will create duplicates in the column.

Central Arizona College  
Factbook  
Fall Cancelled Class Report  
(Includes only classes where enrollment will be reported on day 45)  
Fall 2016

Division	# Cancelled Classes	Classes Enrollment > 0	Total Classes	% Cancelled	% >Zero Enrollment	Max Enrollment >0 Classes	Total Enrollment	% of max enrollment	Average Class Size
Business	34	108	142	24%	76%	3,509	1,701	48%	15.8
Communications	22	177	199	11%	89%	3,924	2,807	72%	15.9
Creative Arts	13	87	100	13%	87%	1,594	1,072	67%	12.3
Education	4	29	33	12%	88%	1,071	536	50%	18.5
Health Careers	38	52	90	42%	58%	1,299	908	70%	17.7
Honors	7	12	19	37%	63%	170	56	34%	4.8
Math	15	108	123	12%	88%	3,108	2,197	71%	20.3
Nursing	0	6	6	0%	100%	180	166	92%	27.7
Nutrition	1	23	24	4%	96%	602	324	54%	15.0
Public Safety	8	24	32	25%	75%	873	244	28%	10.2
Science	7	89	96	7%	93%	2,052	1,463	71%	16.4
Social and Behavioral Science	17	101	118	14%	86%	2,755	1,979	72%	19.6
Sports & Fitness	17	64	81	21%	79%	1,796	1,000	56%	16.3
Technology	25	72	97	26%	74%	1,283	799	62%	11.2
Workforce/Community Education	2	18	20	10%	90%	429	207	48%	11.5
<b>Grand Total</b>	<b>210</b>	<b>970</b>	<b>1,180</b>	<b>18%</b>	<b>82%</b>	<b>24,645</b>	<b>15,461</b>	<b>63%</b>	<b>16.0</b>

Source: Semester Cancelled Class by Division Report 10/25/2016

\* Each iTV course is only counted once no matter how many locations it broadcasts to. Also, each overlay course is only counted once no matter how many courses an instructor is teaching simultaneously.

\*Independent Study Instructional Method courses are not counted.

\*CRNs may not be summed down the Term Code column to equal the Grand Total as some courses may have multiple Credit Hour values and will create duplicates in the column.

Central Arizona College  
Factbook  
Fall Cancelled Class Report  
(Includes only classes where enrollment will be reported on day 45)

Fall 2016									
Instructional Method	# Cancelled Classes	Classes Enrollment > 0	Total Classes	% Cancelled	% >Zero Enrollment	Max Enrollment >0 Classes	Total Enrollment	% of max enrollment	Average Class Size
Face to Face Instruction	108	541	649	17%	83%	12,384	7,869	64%	14.6
Hybrid - F2F/Online	31	117	148	21%	79%	2,664	1,822	68%	15.6
Hybrid - Online/iTV	29	54	83	35%	65%	2,443	870	36%	16.1
Interactive Television (iTV)	12	16	28	43%	57%	547	306	56%	19.1
Internship	1	5	6	17%	83%	83	37	45%	7.4
Online/Distance	28	229	257	11%	89%	6,354	4,485	71%	19.6
Online Synch	0	3	3	0%	100%	90	45	50%	15.0
Practicum	2	5	7	29%	71%	80	27	34%	5.4
<b>Grand Total</b>	<b>211</b>	<b>970</b>	<b>1,181</b>	<b>18%</b>	<b>82%</b>	<b>24,645</b>	<b>15,461</b>	<b>63%</b>	<b>15.9</b>

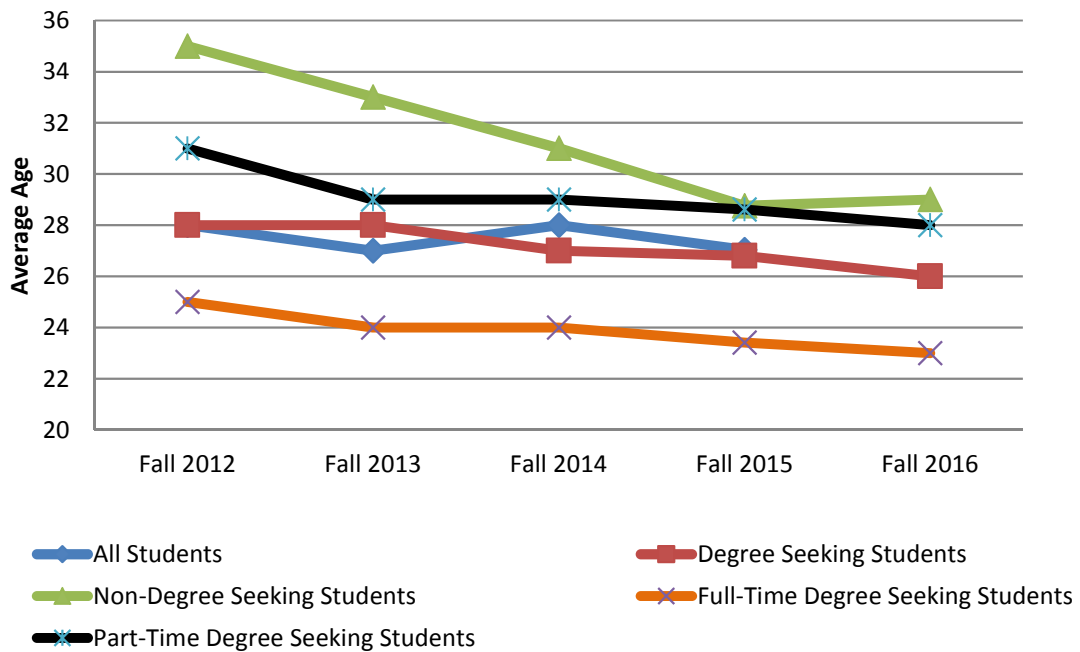
Source: CASA Semester Cancelled Class by Instructional Method Report 10/25/2016

\* Each iTV course is only counted once no matter how many locations it broadcasts to. Also, each overlay course is only counted once no matter how many courses an instructor is teaching simultaneously.

\*Independent Study Instructional Method courses are not counted.

\*CRNs may not be summed down the Term Code column to equal the Grand Total as some courses may have multiple Credit Hour values and will create duplicates in the column.

**Central Arizona College  
Factbook  
Average Age of Students Fall by Semester**



	Fall 2012	Fall 2013	Fall 2014	Fall 2015	Fall 2016
<b>All Students</b>	28	27	28	27	27
<b>Degree Seeking Students</b>	28	28	27	27	26
<b>Full-Time Degree Seeking Students</b>	25	24	24	23	23
<b>Part-Time Degree Seeking Students</b>	31	29	29	29	28
<b>Non-Degree Seeking Students</b>	35	33	31	29	29

Source: Semester Average Age Report 10/25/2016

Central Arizona College Factbook Semester Credit Hour Analysis						
<u>Count of Classes by Credit Hour</u>	<u>Fall 2012</u>	<u>Fall 2013</u>	<u>Fall 2014</u>	<u>Fall 2015</u>	<u>Fall 2016</u>	<u>% Change Fall 2015-2016</u>
0.5	4	6	3	4	0	-100.0%
1	135	101	70	72	78	8.3%
1.25	0	0	0	1	0	-100.0%
1.5	3	5	0	0	0	0.0%
2	63	51	39	55	41	-25.5%
3	713	670	594	750	632	-15.7%
3.25	0	0	11	12	0	-100.0%
4	199	188	177	192	195	1.6%
5	7	5	4	5	7	40.0%
6	8	8	7	2	2	0.0%
8	12	10	5	9	8	-11.1%
9	0	0	6	5	6	20.0%
11	0	0	0	2	1	-50.0%
13	1	1	0	0	0	0.0%
17.5	2	1	1	1	0	-100.0%
<b>Total</b>	<b>1147</b>	<b>1046</b>	<b>917</b>	<b>1110</b>	<b>970</b>	<b>-12.6%</b>
<u>Enrollment by Credit Hour</u>	<u>Fall 2012</u>	<u>Fall 2013</u>	<u>Fall 2014</u>	<u>Fall 2015</u>	<u>Fall 2016</u>	<u>% Change Fall 2015-2016</u>
0.5	75	149	132	128	0	-100.0%
1	2,144	1,757	1,288	1,070	1,174	9.7%
1.25	0	0	0	10	0	-100.0%
1.5	38	51	0	0	0	0.0%
2	867	766	696	866	600	-30.7%
3	12,745	11,948	11,002	10,696	10,203	-4.6%
3.25	0	0	163	170	0	-100.0%
4	3,475	3,198	3,076	3,104	3,212	3.5%
5	80	58	65	63	90	42.9%
6	83	68	65	31	22	-29.0%
8	220	176	107	159	140	-11.9%
9	0	0	56	44	63	43.2%
11	0	0	0	11	9	-18.2%
13	13	13	0	0	0	0.0%
17.5	26	16	20	18	0	-100.0%
<b>Total</b>	<b>19766</b>	<b>18200</b>	<b>16670</b>	<b>16370</b>	<b>15513</b>	<b>-5.2%</b>

(Includes only classes reported on day 45)

Enrollment Numbers are duplicate counts

CRN counts might not sum downwards if a CRN has two Credit hour listings.

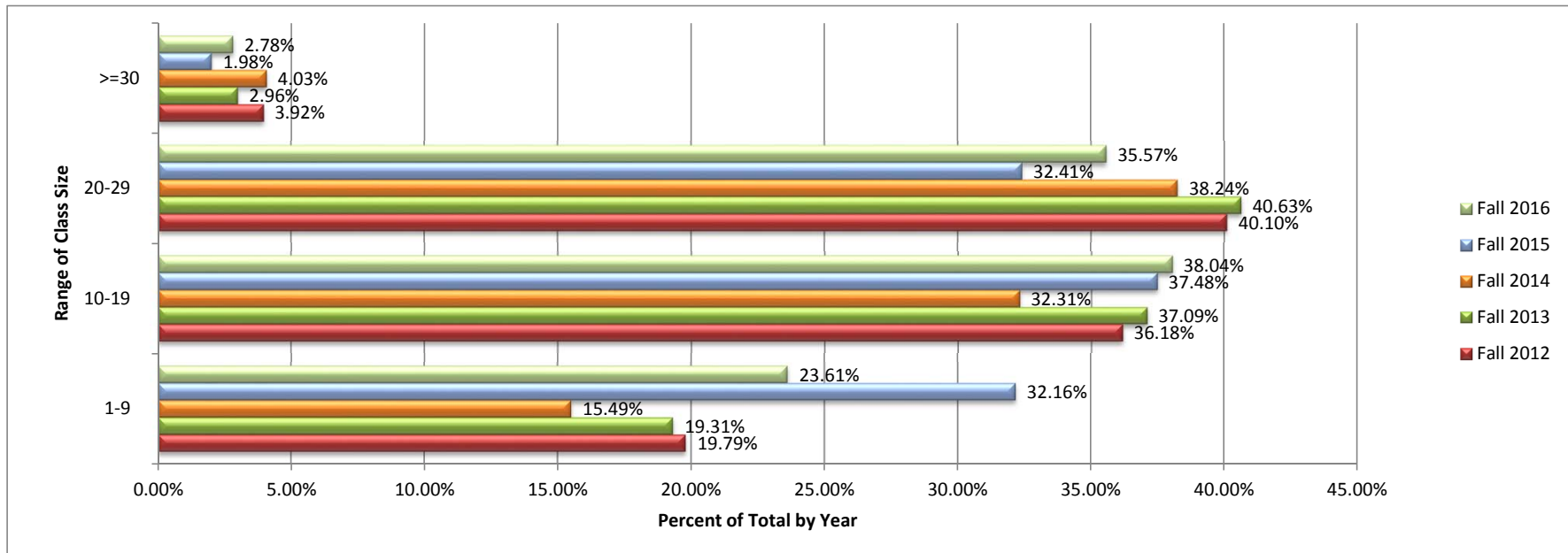
\*Each iTV course is only counted once no matter how many locations it broadcasts to. Also, each overlay course is only counted once no matter how many courses an instructor is teaching simultaneously.

\*Independent Study Instructional Method courses are not counted

Source: CASA Semester Credit Hour Analysis Report 10/24/16

Central Arizona College  
Factbook  
Semester Class Counts by Range of Class Size

Year	Fall 2012		Fall 2013		Fall 2014		Fall 2015		Fall 2016	
Count of Class by Range	#	%	#	%	#	%	#	%	#	%
1-9	227	19.79%	202	19.31%	142	15.49%	357	32.16%	229	23.61%
10-19	415	36.18%	388	37.09%	338	32.31%	392	37.48%	369	38.04%
20-29	460	40.10%	425	40.63%	400	38.24%	339	32.41%	345	35.57%
30-39	39	3.40%	23	2.20%	26	2.49%	14	1.34%	22	2.27%
40-49	4	0.35%	4	0.38%	5	0.48%	1	0.10%	4	0.41%
50-59	2	0.17%	2	0.19%	2	0.19%	1	0.10%	0	0.00%
60-69	0	0.00%	0	0.00%	1	0.10%	5	0.48%	0	0.00%
70-79	0	0.00%	0	0.00%	1	0.10%	0	0.00%	0	0.00%
80-89	0	0.00%	1	0.10%	2	0.19%	1	0.10%	0	0.00%
90-99	0	0.00%	1	0.10%	0	0.00%		0.00%	1	0.10%
>100	0	0.00%		0.00%	0	0.00%		0.00%	0	0.00%
<b>District Total</b>	<b>1,147</b>		<b>1,046</b>		<b>917</b>		<b>1,110</b>		<b>970</b>	



\*Each iTV course is only counted once no matter how many locations it broadcasts to. Also, each overlay course is only counted once no matter how many courses an instructor is teaching simultaneously.

\*Independent Study Instructional Method courses are not counted

Source: CASA Semester Class Counts by Range of Class Size Report 10/24/2016



Central Arizona College Factbook CAC Top 25 FTSE Generating Courses		
Year	Fall 2016	
Course	FTSE	Headcount
ENG101	182.0	910
MAT121	135.7	509
CIS120	81.0	405
MAT151	78.4	294
PSY101	69.8	349
MAT086	67.6	338
BIO181	65.1	244
MAT092	63.2	316
ENG102	60.6	303
BIO156	57.9	217
ENG100	48.6	243
BIO201	48.5	182
RDG094	46.2	231
MHL207	44.8	224
SOC101	42.4	212
COM100	42.0	210
EMS125	37.8	63
BIO160	37.6	141
HPM173	32.2	161
MAT082	31.2	156
MHL100	31.0	155
HSE089	30.4	152
ENG090	29.6	148
HIS101	28.6	143
BIO202	28.3	106

Central Arizona College Factbook CAC Top 25 FTSE Generating Courses		
Year	Fall 2015	
Course	FTSE	Headcount
ENG101	187.4	937
MAT121	125.9	472
CIS120	92.4	462
MAT092	80.6	403
MAT086	70.6	353
MAT151	66.4	249
PSY101	65.8	329
ENG102	63.6	318
BIO156	52.5	197
BIO181	50.9	191
BIO160	50.7	190
COM100	50.6	253
ENG100	50.2	251
BIO201	47.2	177
RDG094	45.0	225
MHL207	40.2	201
MAT082	39.0	195
HSE089	36.8	170
SOC101	36.8	184
HCC116	36.6	183
COM263	32.4	162
HCC100	31.6	158
HPM173	31.2	156
MAT141	29.6	111
BIO202	27.7	104

Central Arizona College Factbook CAC Top 25 FTSE Generating Courses		
Year	Fall 2014	
Course	FTSE	Headcount
ENG101	184.0	920
MAT121	110.9	416
PSY101	102.2	511
CIS120	91.6	458
MAT092	71.6	358
SOC100	65.8	329
ENG102	64.2	321
COM100	62.8	314
MAT151	61.9	232
MAT086	61.8	309
ENG100	58.4	292
BIO160	53.6	201
BIO181	53.6	201
BIO201	53.1	199
MAT082	47.8	239
RDG094	44.6	223
BIO156	42.4	159
HCC116	41.4	207
MHL207	38.6	193
GED088	35.3	163
RDG091	33.9	127
EMS125	33.6	56
NTR141	33.6	126
SPA101	33.3	125
ENG090	32.6	163

Central Arizona College Factbook CAC Top 25 FTSE Generating Courses		
Year	Fall 2013	
Course	FTSE	Headcount
ENG101	185.4	927
MAT121	111.7	419
PSY101	99.8	499
MAT092	92.2	461
CIS120	87.4	437
MAT086	82.2	411
BIO201	69.3	260
COM100	68.8	344
ENG102	67.2	336
GED089	63.2	316
MAT151	63.2	237
ENG100	61.8	309
SOC100	61.8	309
BIO160	61.6	231
RDG094	54.6	273
MAT082	53.8	269
BIO181	49.1	184
BIO156	42.1	158
EMS125	39.5	74
ENG090	36.8	184
NTR141	36.5	137
MHL207	36.4	182
COM263	35.8	179
MHL100	35.8	179
HCC116	34.0	170

Central Arizona College Factbook CAC Top 25 FTSE Generating Courses		
Year	Fall 2012	
Course	FTSE	Headcount
ENG101	184.2	921
MAT121	117.6	441
PSY101	109.4	547
CIS120	102.8	514
MAT092	96.4	482
BIO201	76.5	287
MAT086	74.6	373
ENG102	74.4	372
ENG100	73.8	369
COM100	70.6	353
RDG094	68.2	341
MAT151	68.0	255
BIO160	66.1	248
SOC100	65.4	327
MAT082	61.2	306
GED089	57.8	289
BIO156	57.3	215
EMS125	54.4	102
BIO181	52.8	198
BIO202	40.0	150
CHM130	36.5	137
SPA101	36.3	136
MHL207	35.0	175
COM263	34.0	170
HIS101	33.4	167

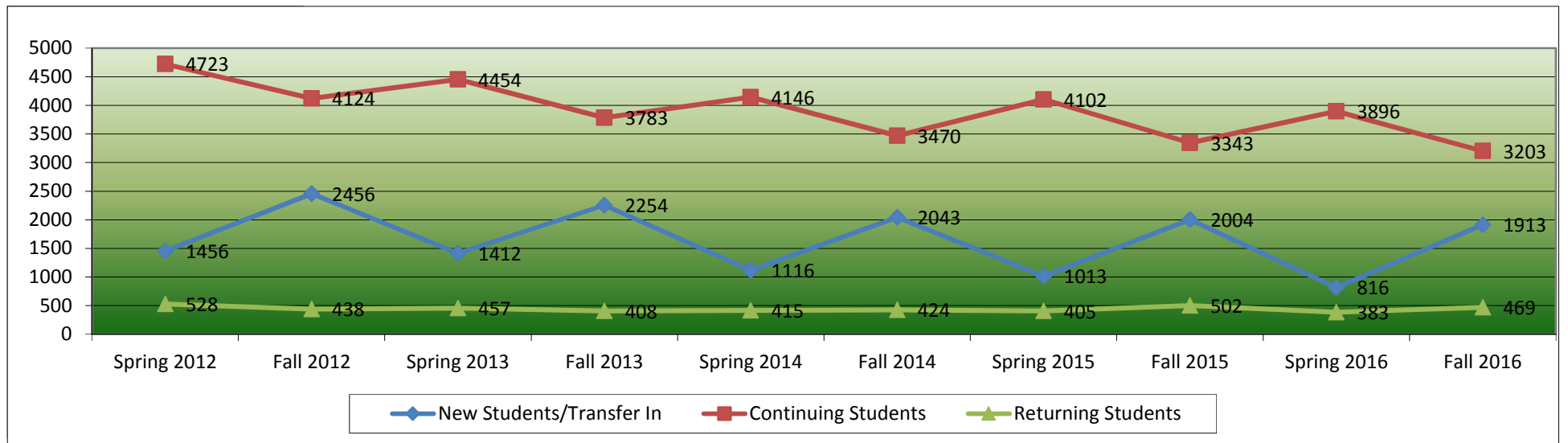
Central Arizona College Factbook CAC Top 25 FTSE Generating Courses		
Year	Fall 2011	
Course	FTSE	Headcount
ENG101	194.4	972
MAT121	123.2	462
CIS120	104.8	524
MAT086	103.8	519
PSY101	103.2	516
MAT092	102.6	513
MAT082	84.2	421
BIO201	77.3	290
ENG100	76.2	381
COM100	75.2	376
ENG102	70.6	353
RDG094	68.8	344
BIO160	68.0	255
MAT151	66.4	249
SOC100	56.4	282
BIO156	53.3	200
BIO181	46.1	173
MHL207	44.0	220
EMS125	40.5	76
NTR141	40.0	150
ENG090	39.6	198
HIS101	39.4	197
BIO202	39.2	147
MHL100	36.4	182
ART100	35.8	179

Note: Total includes non state funded students  
Source: CASA Semester Top 100 Report 10/25/2016

**Central Arizona College  
Factbook  
New/Continuing/Returning Students by Semester**

	Spring 2012	Fall 2012	Spring 2013	Fall 2013	Spring 2014	Fall 2014	Spring 2015	Fall 2015	Spring 2016	Fall 2016
<b>New Students/Transfer In</b>	1456	2456	1412	2254	1116	2043	1013	2004	816	1913
<b>Continuing Students</b>	4723	4124	4454	3783	4146	3470	4102	3343	3896	3203
<b>Returning Students</b>	528	438	457	408	415	424	405	502	383	469
<b>Total</b>	6707	7018	6323	6445	5677	5937	5520	5849	5095	5585

	Spring 2012	Fall 2012	Spring 2013	Fall 2013	Spring 2014	Fall 2014	Spring 2015	Fall 2015	Spring 2016	Fall 2016
<b>New Students/Transfer In</b>	21.7%	35.0%	22.3%	35.0%	19.7%	34.4%	18.4%	34.3%	16.0%	34.3%
<b>Continuing Students</b>	70.4%	58.8%	70.4%	58.7%	73.0%	58.4%	74.3%	57.2%	76.5%	57.4%
<b>Returning Students</b>	7.9%	6.2%	7.2%	6.3%	7.3%	7.1%	7.3%	8.6%	7.5%	8.4%



**Definitions:**

**New Student:** Student who has no previous enrollment records at CAC

**Continuing Student:** Student who has attended CAC in the previous semester

**Returning Student:** Student who has attended CAC in the past but not during the previous semester

**Fall Calculation for Continuing Students** = Enrollment in previous (Spring Semester + Summer2 +Short-Term + OEOX + Summer 1) continuing in Fall Semester

**Spring Calculation for Continuing Students** = Enrollment in previous Fall Semester continuing in Spring

Source: Enrollment Tracking Report 10/25/2016